



**CATHOLIC**  
FOUNDATION  
OF SOUTH LOUISIANA

*2021*  
**IMPACT  
REPORT**

**TRANSFORMING  
TOMORROW**  
*through*  
**GENEROSITY**



# *Message from our* **Leadership**

---

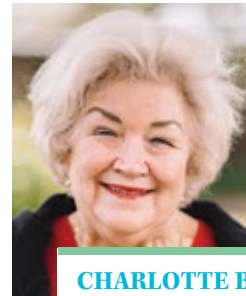
**To our devoted parishioners,**

**We entered 2021 with high hopes and great expectations for advancing our mission and serving the parishes, schools and ministries of our diocese without realizing how the gravity of our mission would impact the community we live in.** We as a diocese and a community have experienced unprecedented challenges over the course of the past two years and despite what we have faced, great blessings and fruit have evolved.

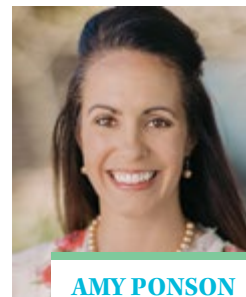
We as a Catholic community are giving, resilient and steadfast in our faith, and you will see just that as you read this year's impact report. Whether you are a donor, a pastor, a principal, a nonprofit leader, or a lay person desiring to make an impact, the Catholic Foundation of South Louisiana remains committed to its mission and vision.

The great generosity we have experienced this past year gives us all great hope for the future of our Catholic Church and our local community. We are oftentimes reminded of the immense power of God's love and 'hope does not disappoint, because the love of God has been poured out within our hearts through the Holy Spirit who was given to us' (Romans 5:5).

We invite you to learn more about how this past year has given us all great hope as you review our Impact Report. The great growth of our endowed assets and distributions, the extensive granting of our Women's Giving Circle, the profound success of #iGiveCatholic and the ability to serve in a unique way throughout the relief efforts of Hurricane Ida! These great successes were made possible by your prayers and generosity and for that we are incredibly grateful!



**CHARLOTTE BOLLINGER**  
CHAIRMAN OF THE BOARD



**AMY PONSON**  
EXECUTIVE DIRECTOR



## ***Our Mission***

The Catholic Foundation of South Louisiana is a **community foundation** established to promote philanthropy, empower priests, inspire our community, and ensure long-term financial stability for the charitable, educational, and spiritual ministries of the Diocese of Houma-Thibodaux.

## ***Why Us***

The Catholic Foundation ensures Catholics a way to **leave their legacy** uniquely aligned with their Catholic values and beliefs. Donors enjoy the satisfaction of knowing that their gift directly supports the Catholic organizations and nonprofits that they choose.

## ***Who We Serve***

The Catholic Foundation assists donors in creating a meaningful impact through **planned giving and charitable fund management**. Additionally, the Foundation works closely with the charitable entities that the donors designate as beneficiaries, as well as our church parishes, schools and ministries to help plan for their financial vitality.



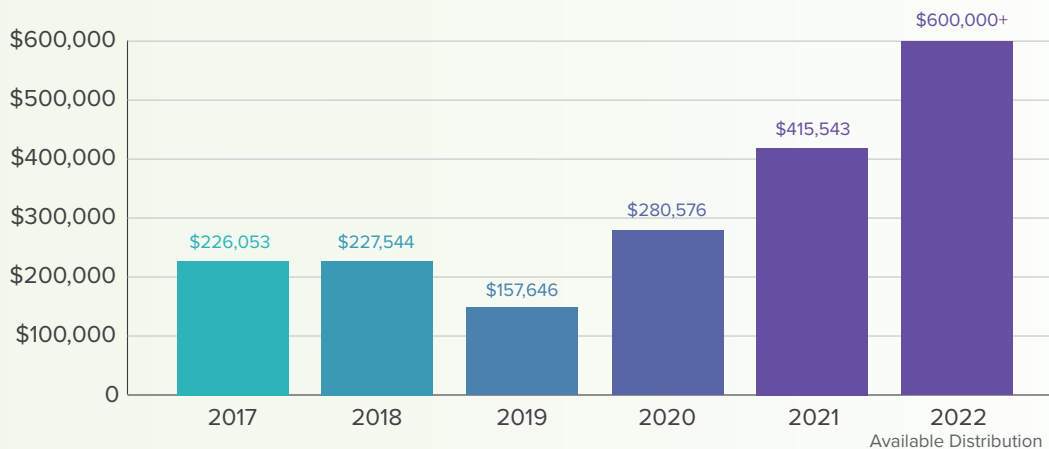
# Snap Shot of 2021

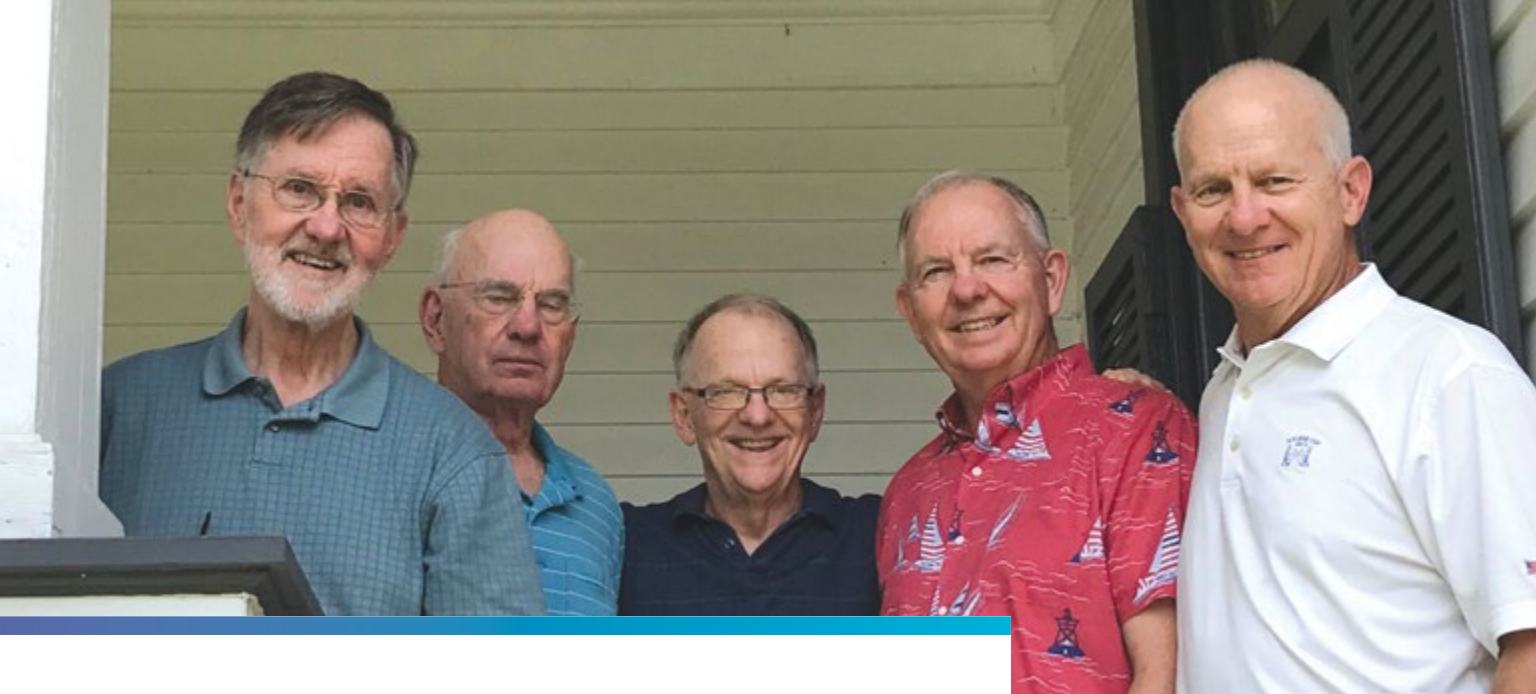
## Fostering Generosity through Endowment Gifts

In six short years, **more than \$1,307,362.30 has been distributed** to ministries within the Diocese of Houma-Thibodaux in support of our managed funds restricted intent. We take great care to invest your funds wisely and in accordance with Catholic values and beliefs, so they grow over time and support the ministries within our diocese. These endowment grants help to provide a consistent and stable source of funding to ministries like our church parishes, Catholic Charities and the diocese for seminarian education.

And in 2022 we are excited to make our maximum distribution of 5% gifting over \$600,000 to restricted ministries. Endowment grant distributions have helped to educate on average three seminarians every year for the diocese, and have helped Catholic Charities feed and provide financial assistance to hundreds of families each year.

### History of Endowment Distributions Made to Various Organizations





## A Family Legacy

### *The Power of Education, Action & Giving*

---

Francis Mederic Durel was the founding President of the Thibodaux College Cardinal Club in 1946. He was a young energetic civic leader committed to helping others and making life better for all. Sadly, he died in 1947 at 39 years.

Antoinette 'Nette' Caillouet Durel was President of the Thibodaux College Mother's Club in the late 1950s. She graduated from Mount Carmel Academy in 1930 and Hotel Dieu School of Nursing in 1934. As an 11-year-old she lost her father. At 34 her husband Med died, leaving her with four young sons, ages 10 months to eight years. And then she learned she was expecting and a fifth son who would be born months later. She had no income and few resources. She decided not to be a victim and to raise her sons with joy and optimism. Her Catholic faith was magical.

Over the years many individuals and institutions, both known and unknown, assisted in raising the Durel boys. From milk left on the front steps, to cooking and cleaning, to education, to medical care, to advice and to most all aspects of life people were there to help. It was always without fanfare, often in secret.

This sense of giving was not unusual and it became clear that throughout their lives Med and Nette also gave of themselves to those in need. Like when asked by her sons how they could repay all those who helped, she simply said 'you can't.... just pass it on.' This perpetual endowment is established as part of 'just passing it on.'

Integral to the growth and development of the Durel boys was their Catholic education with the Brothers of the Sacred Heart and the Sisters of Mount Carmel. The Christian values learned and lived permeated their upbringing reinforcing the charisms of Mount Carmel Academy and Thibodaux College, which were vital in creating a lasting legacy that will impact lives forever.

The Catholic Foundation is honored to support a lifetime of family - the Durel and Caillouet Family Legacy - in support of Catholic education for E. D. White Catholic High School (as derived from Thibodaux College and Mount Carmel Academy).

# Transforming our Community through Donor Advised Funds

*\$352,541.84 Gifted through the Foundation*

---

Donor Advised Funds give donors the flexibility to make a charitable contribution, with a centralized, efficient and accessible repository to manage their charitable giving. Gifts of cash, securities, or other appreciated assets may be gifted into a DAF, and a minimum of \$10,000 is needed to begin the fund. You may recommend grants from the fund at any time to organizations; no minimum annual distributions are required and additional contributions may be made at any time. Grants can be made to any 501(c)3 organization provided its mission does not conflict with Catholic teachings.

**In 2021, the Catholic Foundation made \$352,541.84 in grant distributions from Donor Advised Funds and gifts through our Catholic Foundation for our Catholic churches, schools, and local charitable nonprofits.** Donors have generously given through our Foundation to support our diocese and local nonprofits through this very difficult year, when the need has been so great. We are deeply grateful for their prayers and generosity.



“

“Despite the pandemic’s stay at home order, our family was still able to give to our parish and nonprofits we love through our Donor Advised Fund with the Catholic Foundation of South Louisiana. The Catholic Foundation made it easy to ensure our funds were available for our parish and nonprofits. The fund also allows us to plan our future contributions as well as respond to urgent unplanned non-profits’ needs. We felt comfort in knowing that we had resources available with the Catholic Foundation to support our community as it is more important now than ever to give of our blessings the Lord has given to us.”

- Karen David, *Parishioner of Sacred Heart, Cut Off*

# 2021 Mother Teresa Women's Giving Circle Gives Big



In its third year of infancy, the Mother Teresa Women's Giving Circle members granted out \$93,000 to 10 local nonprofits focusing on impacting women, children and families. Despite coming off of a year of Pandemic and Hurricane Ida, more than 160 Catholic women came together this spring to make a difference locally, leading with prayer and allowing the Lord to guide their grateful generosity. In the spring of 2021, Bishop Fabre along with the members of the Mother Teresa Women's Giving Circle came together at the Pastoral Center and virtually to make presentations of \$93,000 in grants to the local nonprofits listed below, all with the direct intent of making a difference in the lives of women, children and families within the Diocese of Houma-Thibodaux.



“

“It has been a truly humbling experience to watch the members live out Mother Teresa's mission to help women, children and families. Over the course of three years, despite continued challenges we face daily, the Catholic women within our diocese have led with their prayers, their hearts and their vision to make our community a better place. Our vision was to build a community of Catholic women where every gift, no matter how large or small, would make an impact locally. We are honored to have been able to grant out \$93,000 this year and hope to continue to grow our support throughout our local community.”

- Amy Ponson, Executive Director,  
Catholic Foundation of South Louisiana

## 2021 Grant Recipients



**Gift of \$12,000-\$15,000 to:**

Terrebonne Children's Advocacy Center,  
Individual and Family Assistance,  
Caritas Food Pantry – East Houma



**Gift of \$10,000 to:**

Catholic Community Center,  
Lifted by Love



**Gift of \$7,000-\$8,000 to:**

Gulf Coast Social Services,  
Friends of PACT Place,  
Helio Foundation



**Gift of \$5,000 to:**

Dulac Community Center,  
Hope Restored





## #iGiveCatholic Exceeds Expectations

*More than \$2.8 million gifted in six years*

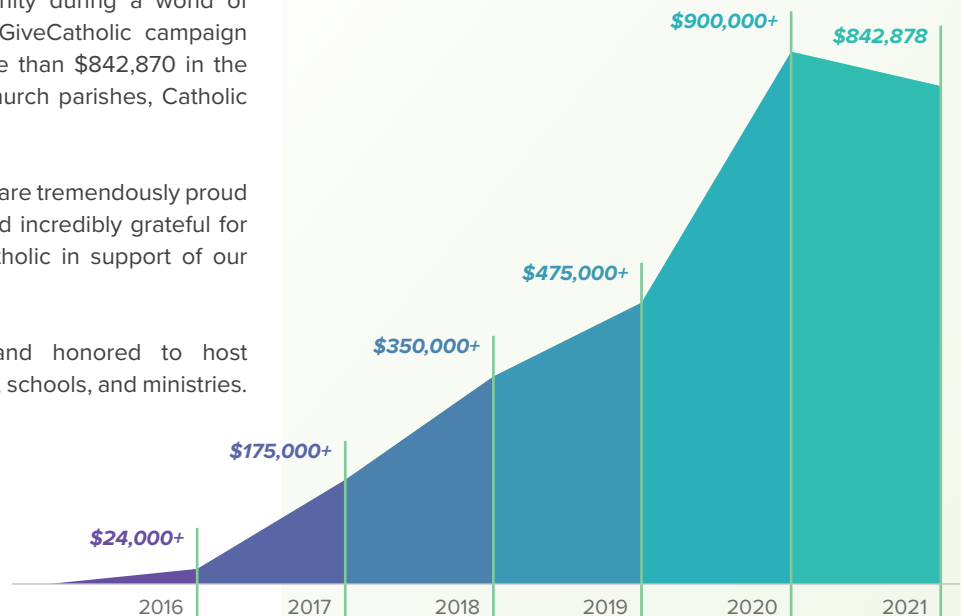
Over the past six years, #iGiveCatholic has grown into a community wide digital fundraising platform, engaging thousands of our Catholic faithful together to Give Catholic each year. Now more than ever, #iGiveCatholic gave our faithful an opportunity to be part of a large Catholic community during a world of uncertainty. During our sixth annual #iGiveCatholic campaign on November 30, 2021, **YOU** gave more than \$842,870 in the Diocese of Houma-Thibodaux for our church parishes, Catholic schools and nonprofit ministries.

With a world of uncertainty around us, we are tremendously proud of our 2021 #iGiveCatholic campaign and incredibly grateful for the thousands of donors who gave Catholic in support of our diocese. Thank you for giving Catholic!

The Catholic Foundation is proud and honored to host #iGiveCatholic each year for our parishes, schools, and ministries.



#iGiveCatholic Through The Years





## Supporting Catholic Charities Throughout Hurricane Ida

The staff of the Catholic Foundation of South Louisiana quickly jumped into action to support Catholic Charities of the Diocese of Houma-Thibodaux post Hurricane Ida. With the gravity of the widespread devastation, the entire staff, team and volunteers of Catholic Charities and the diocese were repurposed to focus on disaster response and relief. With very little communications being available, the Foundation's team stepped in to assist by running the development office so that the work could be focused on helping the people in need. During those immediate days and months post Hurricane Ida, CFSL helped facilitate more than \$5 million dollars in donations and grants to be used directly for disaster relief. As we continue the long road to recovery, the Catholic Foundation has established a long term partnership to assist with grant writing and donor relations for Catholic Charities.

“

“Catholic Charities fights the every day disaster of hunger, sheltering, clothing and comforting our people year round, but the words ‘Disaster Relief’ took on an entirely new meaning for our diocese in 2021 as we quickly responded to Hurricane Ida. Our local community was completely devastated by Ida’s aftermath and I am proud of the tremendous work our organization has done in response and continues to do in response to the needs of the community. We simply could not have done it all without the generosity of so many and our partnership with the Catholic Foundation whose team helped to lead the philanthropic efforts for Catholic Charities.”

- Very Rev. Simon Peter Engurait, V.G.



## Ida Relief Through Our Schools

---

The Catholic Foundation is proud to partner with the Lafourche District Attorney's Office, the Lorio Foundation and the Bayou Community Foundation to expand and extend 'The Pantry' to our Catholic schools.

Additionally, through a grant received by the Bayou Community Foundation, the Catholic Foundation granted out \$50,000 to public and Catholic schools across Lafourche and Terrebonne Parishes in support of students' and teachers' supplies that were lost during Hurricane Ida.

“

“It is truly a gift to be able to bless these schools with opening 'The Pantry' and providing funding to assist with classroom and student supplies. This has been a difficult year for us all and we are grateful to the Bayou Community Foundation and the Lorio Foundation for helping us to make these gifts happen. We are one community together unified in support to make a difference in the lives of children. Thank you to all who made these gifts possible,”

- Amy Ponson, *Executive Director,*  
*Catholic Foundation of South Louisiana*

## Census and Parish Engagement

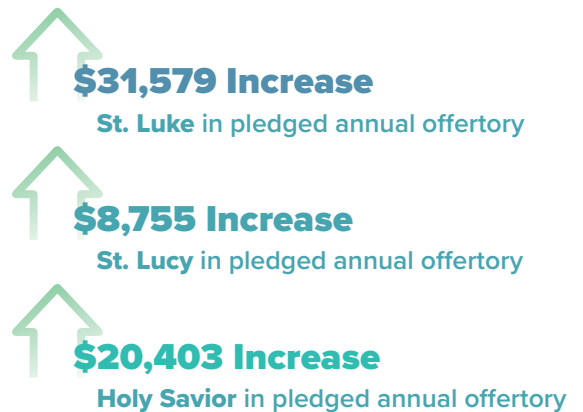
---

Throughout the pandemic, the ability of our church parishes to connect with their parishioners at home became essential as part of their ministry while we navigated the 'stay at home order.' However, oftentimes, the contact information for our parishioners was out of date. Through the desire of our parish priests and at the request of Bishop Fabre, the Catholic Foundation's team lead a diocesan wide communications update for all 39 parishes within the diocese. Additionally, the Foundation's team helped to expand the support we offer to our parishes by providing more training for our parish staff. Our Foundation is continuing to grow in creative ways so that we can help our parishes engage more with the Catholic faithful across our diocese.



## Parish Partnership for Advancing Stewardship

Stewardship is at the heart of our Catholic faith and despite the pandemic, our Catholic Church has continued to be the beacon of hope and fortitude for our Catholic faithful. In an effort to strengthen and advance parish stewardship and offertory, three of our parishes engaged with the Catholic Foundation to implement stewardship and offertory recovery programs. Holy Savior, St. Luke and St. Lucy partnered with CFSL to help develop an annual report, stewardship letters and implement a program that resulted in an increase in their parish offertory providing sustainability to the parish. At the heart of the mission of CFSL is to promote philanthropy and support our priests and parishes and we are proud to help improve sustainability through parish stewardship.



## A Legacy Given by Monsignor Donald Ledet

---

Monsignor Donald Ledet lived a life of dedication to the diocese and the parishes he served. St. Mary's Nativity Catholic Church and school held a special place in his heart as he served as their pastor for a number of years and fell in love with the people of Raceland and the students of the school. The Catholic Foundation is proud to continue Msgr. Ledet's Legacy with a gift that he left through a bequest for more than \$300,000 to St. Mary Nativity Church and School.

“



“In his love of St. Mary's Nativity Church and School, Msgr. Donald Ledet, not just through his priestly ministry and service at St. Mary's for many years, but also through a very generous financial endowment gift, desired to give the parish a gift that will continue to give for years to come. It is a wonderful blessing to know that Msgr. Donald Ledet in partnership with the Catholic Foundation for South Louisiana (CFSL), invested an endowment gift in his name to both the parish and the school. He wanted the two entities to receive perpetual support for both the parish and school through his endowed fund with CFSL. We the people of St. Mary's take pride in feeling and knowing that he loved his worshiping family so very much. We are grateful to Msgr. Ledet, his family and CFSL.”

- Father Clyde Mahler, Pastor

## Support of our Parishes through Grant Writing

---

More than **\$892,418 in grants** were written for parishes, schools and ministries of the Diocese of Houma-Thibodaux throughout 2021. Oftentimes parishes need assistance with grant writing expertise and the team at the Catholic Foundation assists the ministries through their grant needs. Through grantors such as Catholic Extension, United States Conference of Catholic Bishops – Catholic Home Mission, Black and Indian Mission office, KOCH Foundation and many other generous grantors, grants were awarded to various projects.

# *Benefits to* **Our Donors**

---

## **SOCIALLY RESPONSIBLE INVESTING**

All of the Catholic Foundation's funds are invested in accordance with the U.S. Conference of Catholic Bishops' Socially Responsible Investment Guidelines.

---

## **WILLS AND ESTATE PLANNING ASSISTANCE**

Through our partnership with attorneys and tax practitioners, you can easily include your favorite Catholic organizations in your estate plan.

---

## **SUSTAIN OUR CATHOLIC HERITAGE**

Serve generations to come by earmarking funds for your favorite charities or give unrestricted dollars to the causes that mean the most to you.

---

## **GIFTS THAT LAST FOREVER**

Catholic Foundation's staff can help you choose a planned giving vehicle that provides for long-term impact using only your fund's interest while keeping the principal intact.

---

## **MEMORIALIZE A BELOVED PERSON OR CAUSE**

Honor your loved one, your family heritage, or a particular cause by naming your fund as an everlasting remembrance.

---

## **RANGE OF ACCEPTED GIFTS**

By donating stock, appreciated securities, or property, you can avoid capital gains and receive a charitable deduction for the full market value of your gift.

---

## **TAX ADVANTAGES**

As a 501(c)3 organization, our Catholic Foundation offers you advantageous tax benefits for charitable giving

# Ways to Give

## *A Guide To Your Philanthropic Giving*

Our board and staff of the Catholic Foundation of South Louisiana is eager to work with you, your family and your professional advisors in making charitable giving [simple](#) and [impactful](#).

Type of Gift	Donor Benefits	Charitable Cause Benefits
<b>Outright Gift</b>	Receives tax deduction in year of gift.	Can use the gift immediately for organizational needs.
<b>Endowment</b>	Receives tax deduction in year of gift and can memorialize a loved one by naming the endowment.	Receives a perpetual source of support for the ministry, e.g., scholarships.
<b>Donor Advised Fund</b>	Receives immediate tax deduction in year of gift and advises distributors in subsequent years to 501(c)3 or entities of donor's choice.	Can receive gifts to benefit ministry at any time.
<b>Bequest</b>	Receives possible estate tax deduction, perpetual gift opportunity.	Bequest could be held in perpetuity and invested to fund ministry's needs.
<b>Life Estate</b>	Immediate, substantial tax deduction of fair market value; retains and maintains use of property; estate tax benefits	Property transfers to charitable cause when donor's life estate ends.
<b>Retirement/IRA</b>	Receives estate and income tax savings for substantial portion of gift.	Benefits by significant gift upon the death of the donor.
<b>Insurance Policy</b>	Receives income tax deduction for value of policy when transferred, premium payments may be deducted as gifts, also possible income and estate tax deductions.	Receives full face value of policy upon the death of the donor, or may receive current surrender value prior to donor's death.

Please contact our executive director, [Amy Ponson](#), for a confidential conversation at [985-850-3116](tel:985-850-3116) or [cfsi@htdiocese.org](mailto:cfsi@htdiocese.org) for more information.

# Fund Updates

---

The Catholic Foundation of South Louisiana offers a variety of charitable vehicles to donors and ministries including endowments, custodial funds, donor advised funds, and much more. We are honored to work with so many within the Diocese of Houma-Thibodaux to steward your gifts and ensure a great future for so many ministries.

## Catholic Charities Funds

---

- Breaux-Delaune Catholic Charities Endowment
- Byron Talbot Catholic Charities Endowment
- Catholic Charities Endowment
- Charlotte Bollinger Family Catholic Charities Endowment
- Earline and Roy LeBlanc Catholic Charities Thibodaux Food Bank Fund
- Giardina Family Foundation Catholic Charities Endowment
- Harold and Gloria Callais Family Fund for Catholic Charities
- The Harry and Karen David Catholic Charities Endowment
- Marvin and Loretta Marmande Catholic Charities Endowment
- Mary and Al Danos Foundation Catholic Charities Endowment
- Morris and Sandra Hebert Catholic Charities Endowment
- Patrick Murphy Assisi Bridge House Endowment
- The Crawford Family - Assisi Bridge House Fund

## Catholic Church Parish Funds

---

- Frankie and John J. Jones Jr., M.D. St. Thomas Aquinas Endowment
- Maria Immacolata Church Custodial Fund
- Our Lady of Prompt Succor, Chackbay Endowment
- Our Lady of the Isle Custodial Fund
- Our Lady of the Rosary Custodial Fund
- Our Lady of the Rosary Quasi Endowment
- Msgr. Donald Ledet – St. Mary’s Nativity Church Endowment
- Sacred Heart Parish, Cut Off Custodial Fund
- St. Ann Catholic Church Endowment
- St. Bridget Legacy Endowed Fund
- St. Genevieve Catholic Church Endowment
- St. Genevieve Catholic Church Rainy Day Fund
- St. Hilary of Poitiers Youth Formation Endowment
- St. Joseph Co-Cathedral Endowment
- Works of St. Vincent Quasi Endowment

## Catholic School Funds

---

- E.D. White Durel Family Endowment for Tuition Assistance
- E.D. White Facilities Quasi-Endowment
- E.D. White Professional Development Quasi- Endowment
- E.D. White Joel Robichaux Tuition Assistance Endowment Fund
- Msgr. Donald Ledet – St. Mary’s Nativity School Endowment
- Nell Talbot Legendre Elementary School Scholarship Endowment
- St. Augustine Endowment
- St. Genevieve School General Endowment
- St. Joseph Catholic Elementary School Custodial Fund
- St. Joseph Catholic Elementary School Quasi Fund
- VCHS Brother Alfred Kolb Endowment
- VCHS Brother Ray Kuhn Endowment
- VCHS Gabrielle Hebert Endowment
- VCHS General Endowment
- VCHS John and Helen Rizzo Scholarship Endowment
- VCHS Megan Hitt Endowment
- VCHS Student Body Scholarship Endowment
- VCHS T.J. Cantrelle Endowment

## Other Funds

---

- Catholic Foundation General Endowment
- Fr. Willie Todd Foundation - Quasi Endowment
- Office of Vocations; House of Formation Fund



# Funds Update Continued

## Seminarian Education and Priest Retirement Endowments

- Anne-Marie Hebert Ardoin Seminarian Fund
- Bishop Sam Jacobs Seminarian Education Endowment
- Callais Family Fund Endowment for Retired Priests
- Dean J. Chiasson Seminarian Endowment
- Fr. Brett Lapeyrouse Seminarian Education
- Fr. Patrick Riviere Endowment for Seminarian Education
- Giardina Family Foundation Seminarian Education Endowment
- Grant J. Louviere Seminarian Education Endowment
- James J. Buquet, Jr. Family Seminarian Endowment
- Jane & John Dean Seminarian Endowment
- Juliette Martinez Adams Scholarship Endowment
- Lena "Bobbie" Sere' Seminarian Endowment
- Leon 'Ponoke' & Marlene Champagne Seminarian Endowment
- Mary and Al Danos Foundation Seminarian Endowment
- Mary Timothy Everett Seminarian Fund
- Mr. and Mrs. Joseph J. Cefalu, Sr. Seminarian Endowment
- Msgr. Amedee Seminarian Education Endowment
- Msgr. Donald Ledet Seminarian Education Endowment
- Parker Conrad Seminarian Education Endowment
- Paul and Laura Duet Seminarian Endowment/Burse
- Peltier Foundation Priest Retirement Endowment
- Rev. Clemens Schneider Seminarian Endowment
- Richard Peltier Seminarian Endowment
- Saint John Vianney Endowment for Priest Retirement
- Seminarian Education Endowment
- Society of Joseph, Husband of Mary - Seminarian Ed
- The Peltier Foundation Seminarian Endowment Fund
- Viola Ann Wallace Vosbein Memorial Seminarian Burse

## Statement of Financial Position as of June 30, 2021

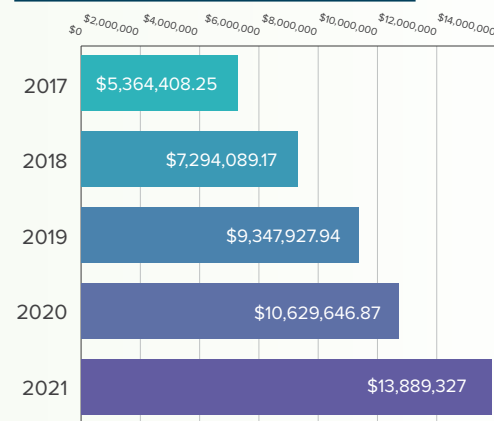
### ASSETS

Cash and Cash Equivalents	\$329,591
Donor Advised Funds	\$1,525,361
Custodial Accounts	\$946,068
Investments	\$7,991,574
Agency Funds <i>(Investments held for others)</i>	\$3,096,732
<b>TOTAL ASSETS</b>	<b>\$13,889,327</b>

### LIABILITIES AND NET ASSETS

<b>Liabilities</b>	
Custodial Funds	\$946,068
Agency Funds <i>(Investments held for others)</i>	\$3,096,732
<b>TOTAL LIABILITIES</b>	<b>\$4,042,800</b>
<b>Net Assets</b>	<b>\$9,846,526</b>

### GROWTH OF ASSETS



**TOTAL LIABILITIES  
AND NET ASSETS**      **\$13,889,327**



## *Catholic Foundation of South Louisiana* **Board of Directors**

---

**Very Rev. PJ Madden**

Diocesan Administrator

**Charlotte Bollinger**

Chairman of the Board

**James J. Buquet, III**

Vice Chairman of the Board

Treasurer

**Jerald Block**

**Bonnie Brady Babin**

**Rene Danos David**

**Hilton Michel, Jr.**

**Bernadette Pickett**

**Patrick Pitre**

**Robert Riviere**

**George Robichaux**

**Rev. Alex Gaudet**

## **Advisory Council**

---

**Lonny Babin**

**Roy Beyer**

**Jeremy Gueldner**

**Thomas 'Tommy' Meyer**

**Tim Robichaux**

**Glenn J. Vice**

## **Staff**

---

**Amy Ponson**

Executive Director

**Nancy Bernard**

Administrative Assistant

**Logan Crosby**

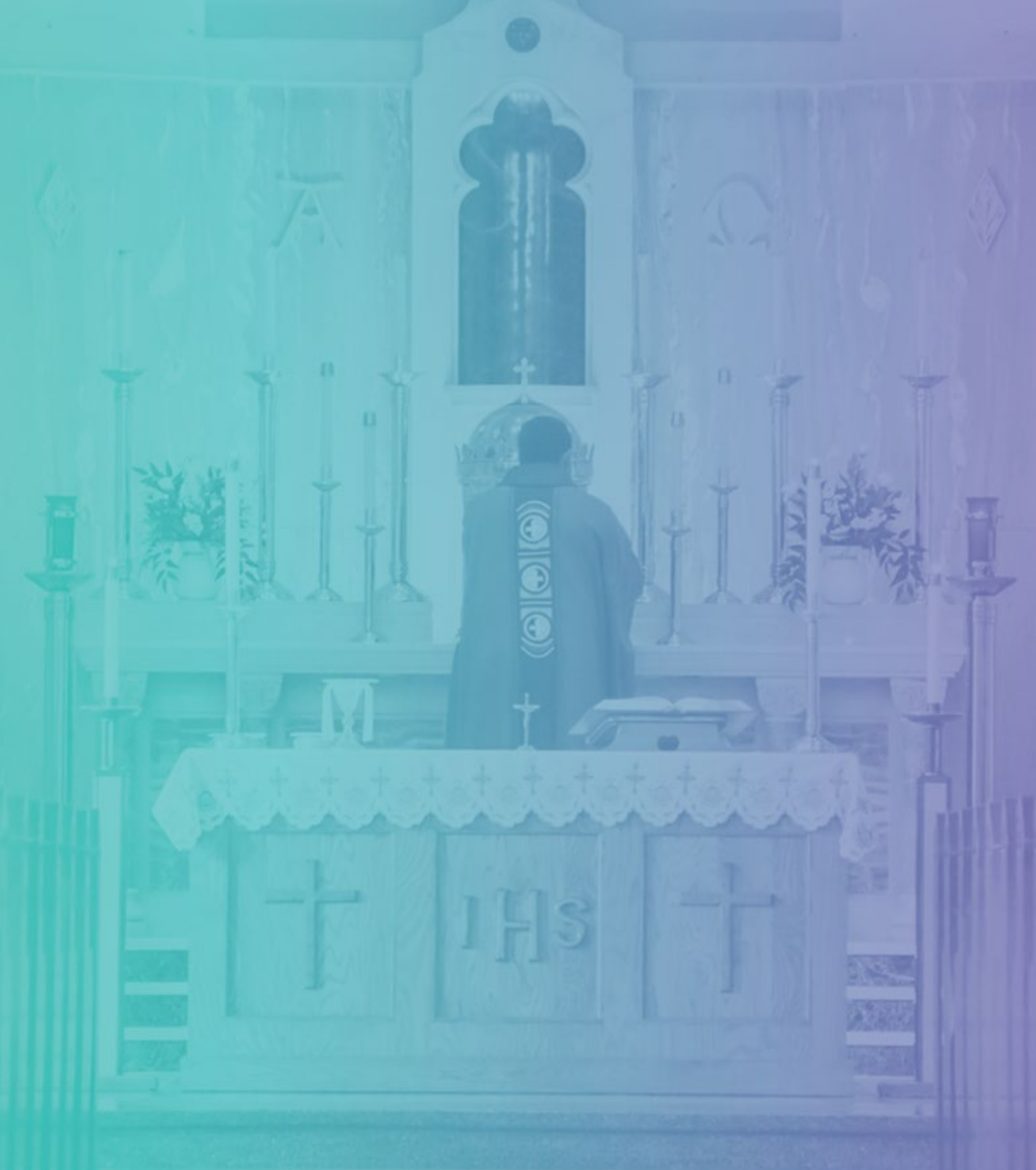
Development Associate

**Lawrence Arceneaux III**

Database Coordinator

**Kasey Champagne**

Staff Accountant





**CATHOLIC**  
**FOUNDATION**  
OF SOUTH LOUISIANA

P. O. Box 505  
Schriever, LA 70395

Non Profit Org.  
U.S. Postage  
**Paid**  
Houma, La  
Permit 299